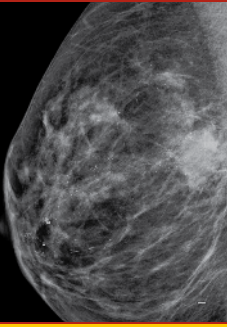




uOttawa

L'Université canadienne
Canada's university

The Department of Radiology
University of Ottawa



Breast Imaging Update at Montebello

October 1-3, 2010

Fairmont Le Château Montebello, Québec



www.ottawaradcme.com

BREAST IMAGING UPDATE AT MONTEBELLO • OCTOBER 1-3, 2010

PARTICIPATING FACULTY

CO-COURSE DIRECTORS

Jean M. Seely, MDCM, FRCPC

Geoff Doherty, MD, MSc, FRCPC

GUEST FACULTY

Nathalie Duchesne, MD, FRCP(C)

Breast Imaging and Intervention Director, The Breast Practices
Montréal, Québec

Leonard M. Glassman, MD, FRCR

Breast Imaging Scientist
American College of Radiology
Department of Radiologic Pathology
Armed Forces Institute of Pathology
Radiologist, Washington Radiology
Associates, PC
Clinical Professor of Radiology
George Washington University
School of Medicine and
Georgetown University School
of Medicine
Washington, DC

UNIVERSITY OF OTTAWA FACULTY

**Angel Arnaout, MD, MSc,
FRCSC, FACS**

Breast Surgical Oncologist

**Sharlene Bilmer, MRI, CBI,
RDMS (BR)**

Breast Imaging Technologist

Geoff Doherty, MD, MSc, FRCPC

Assistant Professor of Radiology

Shilpa V. Lad, MD

Assistant Professor of Radiology

Susan E. Peddle, BSc, MD, FRCPC

Assistant Professor of Radiology

Jean M. Seely, MD, FRCPC

Associate Professor of Radiology
Head, Breast Imaging Section,
The Ottawa Hospital

**Shailendra Verma, MD,
FRCPC, FACP**

Associate Professor of Medicine
(Medical Oncology)

PROGRAM INFORMATION

FORMAT

All-day session on Friday, October 1st and half-day session on Saturday, October 2nd and Sunday, October 3rd.

Veillez noter que plusieurs exposés seront présentés en anglais et en français. Ils seront suivis de séances de discussion et de questions avec les participants.

COURSE OVERVIEW

Under the direction of Drs. Jean Seely and Geoff Doherty, this 2 1/2 day course incorporates a series of lectures by internationally recognized faculty as well as case-based learning sessions. Program highlights include mammography, ultrasound, breast MRI, biopsy techniques, and practical updates on breast pathology, surgical techniques and oncology.

TARGET AUDIENCE

Our target audience includes radiologists interested in breast imaging along with surgeons, oncologists, referring physicians, residents/fellows, technologists, pathologists and nurses.

COURSE OBJECTIVES

Upon completion of this course, participants should be able to:

- Describe the complementary roles of digital mammography, US, and MRI in screening patients at average or high risk.
- Discuss state-of-the-art breast imaging, the approach to the workup of imaging abnormalities and performance of breast biopsies, including mammographic, ultrasound- and MRI-guided techniques.
- Outline current concepts in the management of breast cancer by the breast surgeon and oncologist.
- Describe the approach to digital mammography and US used by the breast technologist.
- Have a greater understanding of radiologic-pathologic correlation in breast diseases, including challenging and controversial pathologic diagnoses.

DISCLOSURES

Speakers will be requested to disclose to the audience, any real or apparent conflict(s) of interest that may have a direct bearing on the subject matter of this program.

ACCREDITATION

The University of Ottawa's Office of Continuing Medical Education is accredited by the Committee on Accreditation of Continuing Medical Education (CACME) to provide accredited CME activities for family physicians and specialists. This event is an Accredited Group Learning Activity (Section 1) as defined by the Maintenance of Certification program of The Royal College of Physicians and Surgeons of Canada for up to 15.25 credits. Through an agreement with the U.S. Accreditation Council for Continuing Medical Education, it is also accredited for 15.25 hours of Category 1 credits towards the Physicians' Recognition Award of the American Medical Association (AMA).

BREAKDOWN OF CREDITS

These total credits are inclusive of 1.0 in Digital Mammography, 2.5 in Breast MRI and 2.0 in Breast Ultrasound.

TECHNOLOGIST CREDIT

The sponsor will be submitting a request to the Canadian Association of Medical Radiation Technologists (CAMRT) for credit approval for all sessions related to technologists.

ACKNOWLEDGEMENT OF ASSISTANCE



Canadian Association of Radiologists
L'Association canadienne des radiologistes

REGISTRATION FEES

TYPE OF REGISTRATION	PHYSICIANS	DISCOUNTED FEES ⁽¹⁾
Full Attendance	\$800 CAD\$	\$375 CAD\$
Friday Only (Full-Day)	\$350 CAD\$	\$225 CAD\$
Saturday (Half-Day)	\$275 CAD\$	\$175 CAD\$
Sunday (Half-Day)	\$275 CAD\$	\$175 CAD\$

(1) Discounted Fees apply to residents, fellows, technologists and all physicians residing permanently outside of North America.

Registration fees include daily breakfasts, coffee breaks, a course syllabus plus one ticket to the Welcome Barbecue on Friday evening (additional tickets are available for family members).

ACKNOWLEDGEMENTS

We gratefully acknowledge the following companies are providing educational grants for this program:

INTER V MEDICAL, INC.

SENTINELLE MEDICAL INC.

THE CHRISTIE GROUP

**ATTEND
ALL 3
DAYS FOR
SAVINGS**

BREAST IMAGING UPDATE AT MONTEBELLO • OCTOBER 1-3, 2010

THURSDAY, SEPTEMBER 30, 2010

6:00-8:00pm **Registration** (for those arriving Thursday afternoon or early evening)

FRIDAY, OCTOBER 1, 2010

7:00-7:40am **Registration and Buffet Breakfast**

7:40-7:45am **Welcome and Introduction**
Course Directors: Drs. Geoff Doherty and Jean Seely

Moderator: Jean M. Seely, MDCM, FRCPC

MAMMOGRAPHY AND BREAST US

7:45-8:15am **The State of Screening Mammography in 2010**
Geoff Doherty, MD, MSc, FRCPC

8:15-8:45am **Work-up of the Mammographic Abnormality**
Shilpa V. Lad, MD

8:45-9:15am **Breast Calcifications**
Leonard M. Glassman, MD, FACR

9:15-9:45am **Update in Breast Ultrasound**
Nathalie Duchesne, MD

9:15-9:45am ● **Pause-café/Visite du salon des exposants**

9:45-10:00am **Questions & Discussion**

10:00-10:30am **Coffee Break & Visit Exhibits (ENGLISH)**

10:00-10:30am ● **L'échographie du sein: règles de l'art**
Nathalie Duchesne, MD

10:30-11:00am **Breast MRI: Appropriate Use**
Jean M. Seely, MDCM, FRCPC

11:00-11:30am **High-Risk Screening for Breast Cancer: The Oncologist's Perspective**
Shailendra Verma, MD, FRCPC, FACP

11:30-12:00pm **High-Risk Screening with Breast MRI**
Jean M. Seely, MDCM, FRCPC

12:00-12:30pm **Panel: Role of Breast MRI in Preoperative Staging of Breast Cancer**
Panelists: Drs. Arnaout, Duchesne, Glassman and Seely

12:30-12:45pm **Questions & Discussion**

12:45-1:45pm **Lunch** (on your own)

Moderator: Geoff Doherty, MD, MSc, FRCPC

BREAST LOCALIZATION AND SURGERY

1:45-2:15pm **Review of Current Breast Surgical Techniques for the Breast Imager**
Angel Arnaout, MD, MSc, FRCSC, FACS

2:15-2:45pm **Breast Localizations: from Stereotactic to US to MRI**
Susan E. Peddle, BSc, MD, FRCPC

2:45-3:00pm **Questions & Discussion**

3:00-3:30pm **Coffee Break & Visit Exhibits**

CASE REVIEW SESSION

3:30-4:00pm **Breast Lesions During Pregnancy and Lactation: Case Review**
Shilpa V. Lad, MD

4:00-4:30pm **Practical Breast MRI: Case Review**
Susan E. Peddle, BSc, MD, FRCPC

4:30-5:00pm **The Male Breast: Case Review**
Geoff Doherty, MD, MSc, FRCPC

5:00-5:15pm **Final Questions & Answers**

6:30-8:30pm **Group Barbecue**

SATURDAY, OCTOBER 2, 2010

7:00-7:40am **Registration and Buffet Breakfast**

7:40-7:45am **Welcome and Introduction**

Moderator: Shilpa V. Lad, MD

BREAST CANCER AND PATHOLOGY

7:45-8:15am **Uncommon Signs of Breast Cancer**
Leonard M. Glassman, MD, FACR

8:15-8:45am **Breast Biopsies: State of the Art**
Nathalie Duchesne, MD

8:45-9:15am **Controversial Pathologies**
Leonard M. Glassman, MD, FACR

9:15-9:45am ● **Pause-café/Visite du salon des exposants**

9:15-9:45am **Radiologic-Pathologic Correlation: Case Review**
Nathalie Duchesne, MD

9:45-10:15am ● **Corrélation radiopathologique-revue de cas**
Nathalie Duchesne, MD

9:45-10:15am **Coffee Break, Quiz and Visit Exhibits**

TREATMENT OF BREAST CANCER

10:15-10:45am **Breast Interventions: A Surgeon's Perspective**
Angel Arnaout, MD, MSc, FRCSC, FACS

10:45-11:15am **Principles of Neoadjuvant Chemotherapy**
Shailendra Verma, MD, FRCPC, FACP

11:15-11:45am **Panel: Effect of Imaging on Management**
Panelists: Drs. Arnaout, Duchesne, Doherty, Glassman and Verma

11:45-12:15pm **Questions & Discussion**

SUNDAY, OCTOBER 3, 2010

7:15-7:55am **Registration and Buffet Breakfast**

7:55-8:00am **Welcome and Introduction**

Moderator: Geoff Doherty, MD, MSc, FRCPC

DIGITAL MAMMOGRAPHY, US AND BREAST MRI

8:00-8:30am **Digital Mammography**
Jean M. Seely, MDCM, FRCPC

8:30-9:00am **Digital Mammography—Navigating the Difference: A Technologist's Perspective**
Sharlene Bilmer, MRT, CBI, RDMS(BR)

9:00-9:30am **The Young Female Breast**
Leonard M. Glassman, MD, FACR

9:30-10:00am **Breast MRI Biopsies**
Geoff Doherty, MD, MSc, FRCPC

10:00-10:30am **Coffee Break, Quiz and Visit Exhibits**

Moderator: Jean M. Seely, MDCM, FRCPC

10:30-11:00am **Breast US from a Technologist's Perspective**
Sharlene Bilmer, MRT, CBI, RDMS(BR)

11:00-11:30am **The Controversy of Screening Breast US**
Susan E. Peddle, BSc, MD, FRCPC

11:30-12:00pm **Correlating Breast MRI with US: How to do a Good Second-Look US**
Shilpa V. Lad, MD

Noon-12:30pm **Review of Quiz Cases**
(and Announcement of Quiz Winner)

12:30-12:45pm **Questions & Discussion**

12:45pm **Program Evaluation and Adjournment**

BREAST IMAGING UPDATE AT MONTEBELLO • OCTOBER 1-3, 2010

MONTEBELLO & THE FAIRMONT LE CHÂTEAU MONTEBELLO

Located midway between Montreal and Ottawa on the banks of the Ottawa River, Fairmont Le Château Montebello is a stunning hotel (and a nature lover's paradise) which has earned a well-deserved reputation as one of the prime luxury resorts in Eastern Canada. Built on the site of a 17th-century seigneurial estate, this spectacular "log cabin" (the largest in the world) permits its guests to enjoy the ultimate in rustic elegance.

We have selected early October for our meeting, and we think the resort, its beautiful surroundings and activities, will create a perfect autumn weekend getaway for you...or even a great girlfriends' weekend with its extensive Fairmont Spa options. If you're bringing the entire family, choose from horseback riding, cycling, fishing, canoeing/kayaking, golf, hiking in the adjacent wilderness habitat of Fairmont Kenauk, or even try the Land Rover Experience Driving School (Canada's Only). Or, you and the family could unwind at the hotel's large indoor pool. The hotel offers an amazing array of kids' activities too. In addition, children will be awed by the nearby Omega Park, a local wildlife sanctuary with wild animals roaming free.

HOTEL RESERVATIONS – RESERVE EARLY!

We encourage all to reserve your room VERY EARLY due to the popularity of Montebello during Fall weekends.

A block of rooms has been established for our group with the following discounted rates:

- **Fairmont Rooms: \$209 CAD per night** (*plus applicable taxes*)
In their elegantly rustic decor, these charming accommodations are located predominantly on the 1st and 2nd floors and feature large windows. Views are of the lush green lawns or shady lane leading into the resort. Rooms feature a modest sized bathroom with shower/tub combination. Max occupancy is 4 people, depending upon bed type. Square footage: 210 sq feet
- **Deluxe Rooms: \$279 CAD per night** (*plus applicable taxes*)
Completely renovated and located toward the end of the hallways on each floor, these large rooms are perfect for families or guests seeking additional space. The Deluxe Rooms also include an alcove sitting area. The rooms feature a modest sized bathroom with shower/tub combination. Max occupancy is 5 people, depending upon bed type. Square footage: 305-345 sq feet
- **Deluxe River View Rooms: \$289 per night** (*plus applicable taxes*)
Same as deluxe room but with a view of the Ottawa River. We have a limited # of these on hold for the group.

Please reserve your accommodations no later than **July 18, 2010** to avoid disappointment. The easiest way to reserve your room is to go to the following website customized for our group:
<https://resweb.passkey.com/go/breastimagingupdate>
Alternatively, you may call Fairmont Reservations at (819) 423-6341 x7688 or 1-800-441-1414 (and mention our group code: **DB0501**).

CURRENT TAXES AND GRATUITIES

Current taxes are 5% GST and 7.5% Provincial Sales Tax and \$2 per room per night Lodging. Each extra person (over 18) sharing a room will be charged an additional \$30 CAD per night.

CHILDREN'S POLICY

The Fairmont encourages you to bring your children and there will be no charge for children up to and including 18 years who share with their parents. Max occupancy is 4 persons per room.



SPECIAL GROUP ACTIVITIES

Friday Optional Activities

- **Late Morning:** Optional Guided History Tour of the hotel followed by private guided tour of Manoir-Papineau (*adjacent to the hotel*) (*complimentary*) (*suggested for adults*)
- **3:00-4:00pm:** Optional Horseback Ride (*very limited*) \$33 per person, including taxes for adults/children (*also offered on Saturday*)
- **6:30-8:30pm:** Group Barbecue
One ticket is included with registration fee and extra tickets for the family are available at \$70 per adult/teenager or \$25 per child (*ages 1-12*)

Saturday Optional Activities

- **1:30pm:** Golf tee times will be arranged (*more information will follow in the summer*)
- **3:00-4:00pm:** Optional Horseback Ride (*very limited*) \$33 per person, including taxes for adults/children (*also offered on Friday*)

Sunday Optional Activities

The meeting will be concluding by 1 pm and, before heading home, you may want to consider the lavish Sunday Brunch taking place at the Fairmont Montebello. Reservations are **STRONGLY** suggested (especially in the Fall); reserve your place by calling (819) 423-6341.



MEETING REGISTRATION FORM

2010 UNIVERSITY OF OTTAWA RADIOLOGY CME

ON-LINE REGISTRATION IS
THE EASIEST WAY TO RESERVE
YOUR PLACE
www.ottawaradcme.com

BREAST IMAGING UPDATE AT MONTEBELLO

October 1-3, 2010

REGISTRANT INFORMATION *(please print)*

NAME _____

CREDENTIALS *(MD, DO, for name badge)*

SPECIALTY: RADIOLOGY OTHER: _____

SUBSPECIALTY _____

ADDRESS _____

CITY _____ DAYTIME TELEPHONE _____

PROVINCE/STATE _____ POSTAL CODE/ZIP _____ COUNTRY _____

EMAIL ADDRESS *(required for registration confirmation)*

REGISTRATION FEES *(to be paid in CAD\$)*

TYPE OF REGISTRATION	PHYSICIANS	DISCOUNTED FEES ⁽¹⁾
Full Attendance	<input type="checkbox"/> \$800 CAD\$	<input type="checkbox"/> \$375 CAD\$
Friday Only (Full-Day)	<input type="checkbox"/> \$350 CAD\$	<input type="checkbox"/> \$225 CAD\$
Saturday Only (Half-Day)	<input type="checkbox"/> \$275 CAD\$	<input type="checkbox"/> \$175 CAD\$
Sunday Only (Half-Day)	<input type="checkbox"/> \$275 CAD\$	<input type="checkbox"/> \$175 CAD\$

⁽¹⁾ Discounted Fees apply to residents, fellows, technologists and all physicians residing permanently outside of North America.

GROUP ACTIVITIES

In addition to activities below, we will be offering horseback riding on Friday and Saturday in addition to Saturday golf. Sign-up will take place in September with charges going to your room.

FRIDAY

Optional Guided History Tour of Hotel/Tour of Manoir-Papineau

_____ @ \$0 (complimentary)

Welcome Barbecue *(one ticket is provided as part of registration fee)*

_____ extra adult tickets @ \$70 per adult/teenager

_____ child tickets @ \$25 per child ages 1-12

SATURDAY

Afternoon Golf *(can be charged to your hotel room)*

_____ places

Subtotal Registration Fee: \$ _____ CAD

Subtotal Extra Barbecue Tickets: \$ _____ CAD
(attendee receives one complimentary ticket)

GRAND TOTAL: \$ _____ CAD

SYLLABUS PREFERENCE:

- I prefer a printed syllabus
 I prefer a CD or USB rather than a printed syllabus

METHODS OF PAYMENT

- Cheque in Canadian Dollars made payable to:
Ottawa Hospital-Department of Radiology
 Credit Card *(print clearly below)*

PAYMENT BY CREDIT CARD

MEMBER'S NAME _____

CARD NUMBER _____

EXPIRATION DATE _____

CARD TYPE: VISA MASTERCARD

SIGNATURE *(required to process)* _____

CANCELLATION POLICY FOR REGISTRANTS

Written notification of cancellation must be received via email 30 or more days prior to the start of the course. Refunds are possible subject to a \$50 cancellation fee (\$25 for daily registrants). Cancellations made within 30 days are subject to a \$100 cancellation fee (\$50 for daily registrants). Note email address to send cancellation notice: info@ottawaradcme.com

COURSE CANCELLATION POLICY

The University of Ottawa CME reserves the right to cancel courses. Registrants will be notified at the earliest possible date in the event of a cancellation. Registration fees for courses cancelled by the University of Ottawa CME will be refunded; however, the University of Ottawa CME will not be liable for any loss, damages or other expenses that such cancellations may cause.

MAIL REGISTRATION & CHEQUE TO:

CME Program Coordinator
The Ottawa Hospital (General Campus)
Department of Radiology
501 Smyth, Module S
Ottawa, ON K1H 8L6
Canada

FOR FURTHER INFORMATION:

Email: info@ottawaradcme.com
Telephone: (613) 798-5555 x16894 • Fax: (613) 737-8830

REQUIRED TRAVEL DOCUMENTATION

As of Jan 23, 2007, travelers to/from Canada, Mexico, Central and South America, the Caribbean and Bermuda will be required to have a passport or other secure, accepted document to enter or re-enter the U.S. This requirement will apply to all air travel and will be extended to all land and sea border crossings in June 2009.



uOttawa

L'Université canadienne
Canada's university



uOttawa

Mark E. Schweitzer, MD
Professor & Chair, Department of Radiology
University of Ottawa
Chief, Diagnostic Imaging, The Ottawa Hospital
General Campus, 501 Smyth (Module S)
Ottawa, ON K1H 8L6
Canada

SUMMER 2010-SUMMER 2011 CME COURSES



**MUSCULOSKELETAL IMAGING UPDATE
IN QUEBEC CITY**
June 28-30, 2010 • Fairmont Le Château Frontenac



**CARDIOTHORACIC IMAGING UPDATE
IN MONTREAL**
July 2-4, 2010 • Fairmont Queen Elizabeth



**HUDA PHYSICS REVIEW COURSE FOR
RESIDENTS/FELLOWS**
July 16-18, 2010 • Sheraton Hotel Ottawa



BREAST IMAGING UPDATE IN MONTEBELLO
October 1-3, 2010
Fairmont Le Château Montebello (Québec)



**ONCOLOGY IMAGING
UPDATE IN COSTA RICA**
March 14-18, 2011 • Hilton Papagayo, Costa Rica



**1ST ANNUAL OTTAWA
RESIDENT REVIEW COURSE**
April 3-8, 2011 • Ottawa



**VASCULAR ACCESS
UPDATE IN OTTAWA**
May 2011



**CLINICAL CASE-BASED
RADIOLOGY UPDATE IN ICELAND**
July 18-22, 2011 • Grand Hotel Reykjavik
(postponed from Summer 2010 due to volcanic activity)



**MULTI-MODALITY
GYNECOLOGICAL & OBSTETRIC IMAGING:
THE REQUISITES & BEYOND**
September 2011 • Ottawa, Ontario

UNIVERSITY OF OTTAWA RADIOLOGY CME CONFERENCES
VISIT WWW.OTTAWARADCME.COM FOR MORE DETAILS!